

Datasheet
PeCo LC 3.0/3.0 PRO



Success is countable!

Laser-based counting of all road users
including classification and speed recording

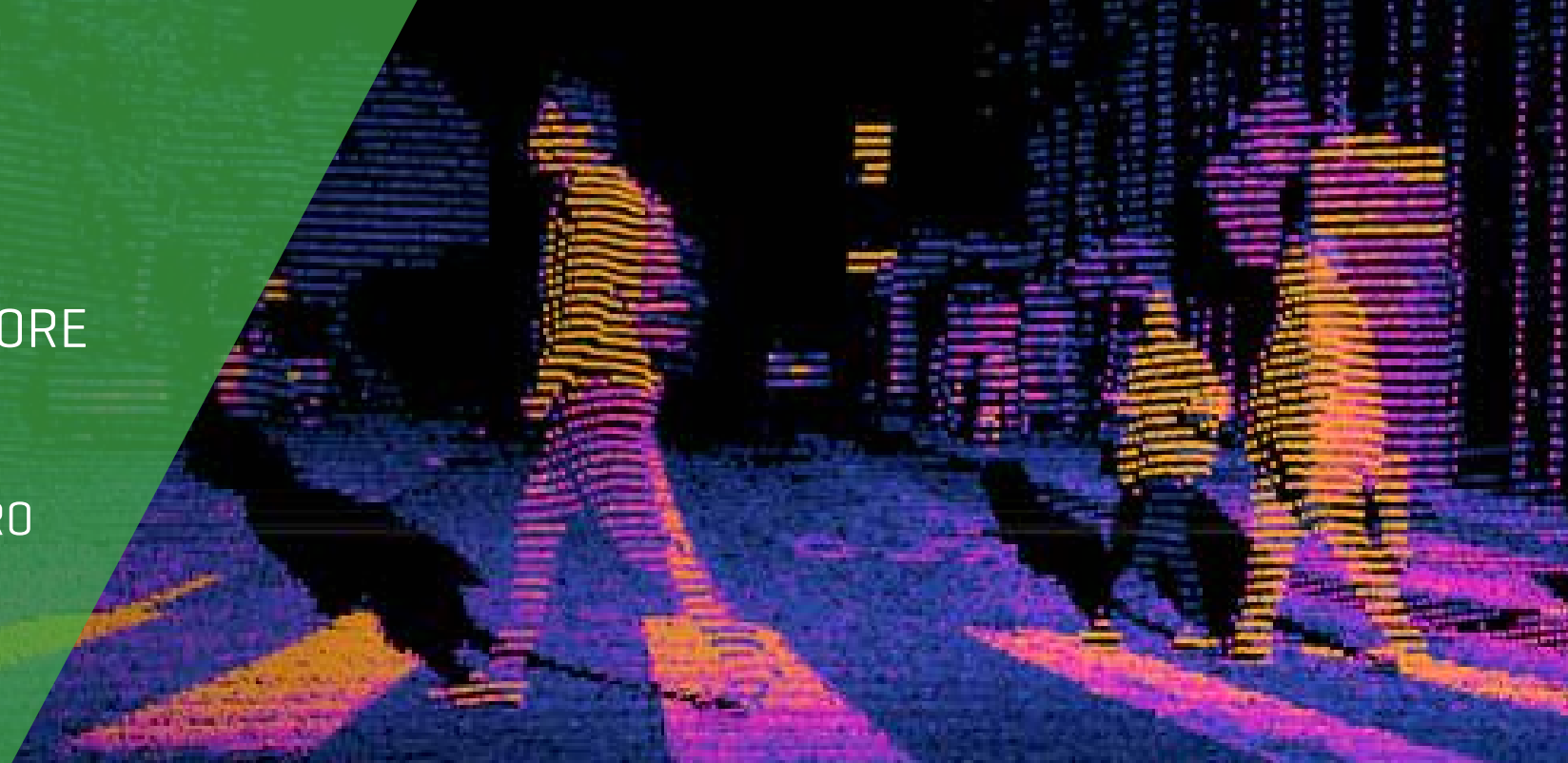


Laser-based counting

PEOPLECOUNTER AND MORE

Laserscanner

PeCo LC 3.0 / PeCo LC 3.0 PRO



ABOUT PeCo LC 3.0/3.0 PRO



The **PeCo LC 3.0 / PeCo LC 3.0 PRO** Laser scanner is the world novelty in the field of outdoor counting in 2022! The laser scanner not only registers the movement of people in all conceivable entrance, exit and passage areas of real estate and pedestrian zones without restricting the movement of the people to be recorded by channeling, but it also records as **PRO-variant (PeCo LC 3.0 PRO)** also all other road users and assigns them to different "categories/classes". Using special multi-layer technology, the direction of movement of all people and road users in the detection area is registered, from which the frequencies are determined. The **PeCo LC 3.0 / PeCo LC 3.0 PRO** is the first outdoor scanner that directly determines the capture rate. The data is prepared and ready for evaluation in the LASE PeCo cloud.

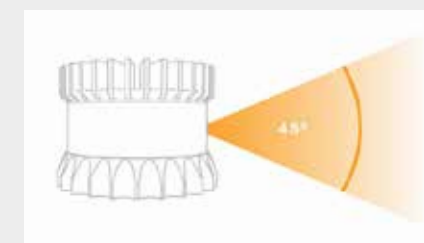
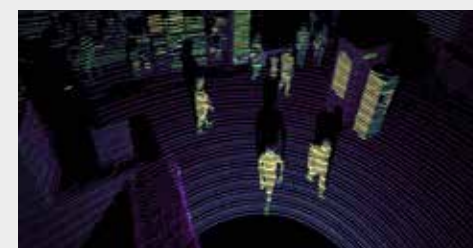
FEATURES PeCo LC 3.0/3.0 PRO

- ✔ Suitable for outdoor use, insensitive to environmental influences
- ✔ High counting accuracy of up to 98%
- ✔ Mounting height up to 20 m
- ✔ Passage width up to 40 m
- ✔ Classification of people, vehicles and other road users into their subgroups (PRO version)
- ✔ Several measuring lines per device including direction detection
- ✔ Recording of speeds and dwell times
- ✔ Laser class 1 "eye safe" [EN 60825-1:2014]
- ✔ Multi-layer scanner [32 or 64 layers] for reliable counting
- ✔ Safety under data protection law
- ✔ Capture rate with a scanner [frequency before and into a store]

APPLICATION AREAS PeCo LC 3.0/3.0 PRO

- ✈ Airports / main station
- 🏙 Cities
- 📅 Events
- 🏦 Banks
- 🛍 Retail
- 🛒 Shopping center
- 🎡 Amusement parks
- 🏛 Exhibition halls
- 🏛 Museums
- 🚦 Traffic

TECHNICAL DETAILS PeCo LC 3.0/3.0 PRO



PECO LC 3.0

PECO LC 3.0 PRO

Characteristics		
Vertical resolution	32 layers	64 layers
Installation height	3 m ... 20 m	3 m ... 20 m
Detection width	up to 40 m	up to 40 m
Counting accuracy	up to 98%	
Laser class	class 1 [eye safe; EN 60825-1:2014]	
Scan and profile measurements		
Opening angle	45° [+22,5° bis -22.5°]	
Scan frequency	10 or 20 Hz	
Electrics		
Operating voltage	12 or 24 VDC	
Power consumption	14-20 W	
Dimensions [diameter x height]	85mm x 73,5mm	
Weight	447 g	
Environmental data		
Operating temperature	-40°C ... +60°C	
Protection class	IP68, IP69K	
Features		
Counting people	YES	YES
Classification people / traffic	NO	YES
Zones including dwell times	NO	YES
Speeds	NO	YES
Route analysis	NO	YES
Capture Rate	YES	YES

Contact

LASE PeCo Systemtechnik GmbH
Rudolf-Diesel-Str. 115
DE-46485 Wesel
Germany

Tel.: +49 281 95990-133

Fax: +49 281 95990-111

Website: www.lase-peco.com

Mail: counting@lase-peco.com

