



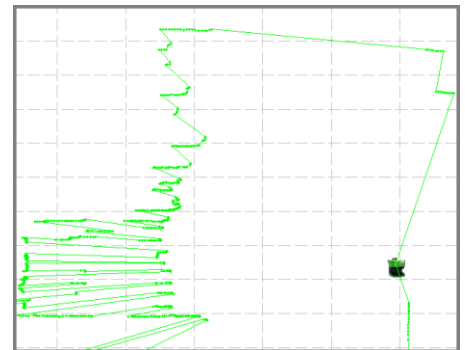
# LASE 2000D-125 PRO Security

## 2D Laserscanner

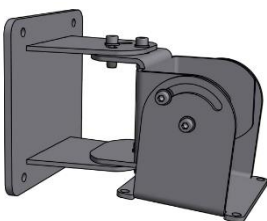


### Features and benefits:

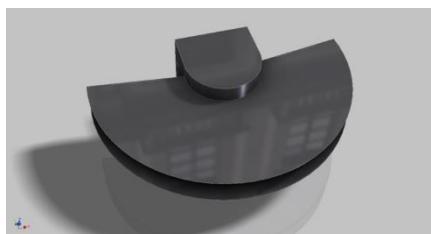
- Capable, efficient laser measuring sensor for an operating range up to 80m [100% reflectivity]
  - Operating range of 40 m on natural dark targets [10% reflectivity]
  - Outstanding performance even in adverserly weather conditions
  - Compact casing with International Protection Marking IP 67 and integrated heating
  - Fast signal processing
  - 4 switching inputs
  - 4 switching outputs in relay function
  - 5 echo technology
- High accuracy and fast scan frequency
  - Extreme capable in numerous uses
  - Fast, reliable detection of objects in nearly all environmental conditions
  - Extensive product family with various product series and types for all demands regarding performance and costs
  - Best cost effectiveness in these sensor class
  - Fast and easy adjustment with the engineering tool
  - Self-Check-Function to enhance system availability



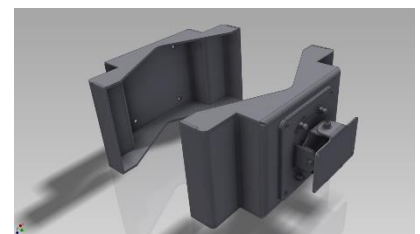
2D-measuring profile



Pylon bracket +/-90° bendable

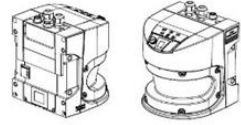


Weather protection cover



Pipe bracket

### Technical data:

<b>Features</b>		
Operating range	0m ... 80m	
Range	0m ... 40 m	Range for 10 % reflectivity
Divergence [Spot size]	11,9 mrad	
Light source	Infrared	[905 nm]
Optical indicators	5 x LED	7-Segment Display
Laser class	Class 1	EN/IEC 60825-1:2014; eyesafe
<b>Scan- / and profile measurement</b>		
Aperture angle	190°	
Angular resolution	0,166° / 0,25° / 0,5° / 0,667° / 1°	
Scanning frequency	25 Hz / 35 Hz / 50 Hz / 75 Hz / 100 Hz	
<b>Interfaces</b>		
Ethernet	10/100 Mbit/s	TCP/IP, OPC
Switching inputs	4	
Switching outputs	4	Outputs in relay function
<b>Mechanics / electronics</b>		
Electrical connection	4 x M12-Round connector	
Operating voltage	DC 24V +/- 20%	
Power consumption	22 W (without heating) + 55W heating	typical
Protection class	IP 67	DIN 60529
Dimensions [L x W x H]	160 x 155 x 185 mm	
Weight	3,7 kg	
<b>Ambient data</b>		
Ambient operating temperature	-30° C ... +50° C	
Storage temperature	-30° C ... +70° C	
Ambient light immunity	70.000 lx	