



# LASE 2000D-138

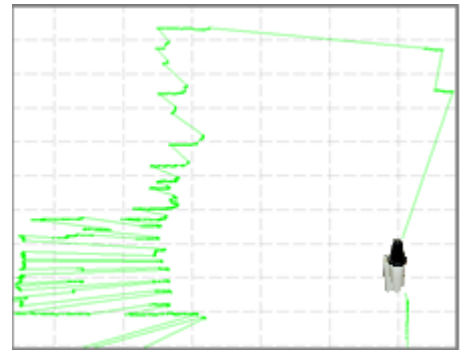
## Long-range outdoor scanner



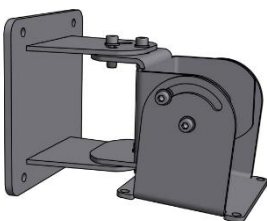
### Features und advantages:

- Contactless long-range 2D-profile measurements
- Outdoor-applicable by integrated heating-system
- Range of 80 m on dark natural targets
- Range up to 250 m on natural targets
- High accuracy, resolution and measuring rate
- Interfaces RS-422; Ethernet TCP/IP, CAN BUS
- Build in self test (BIST)
- Rugged design – IP 67
- 2 echo technology

- High performance in several applications
- Laser measuring-sensor with highest accuracy in its class
- Fast and reliable detection of objects in nearly all environments
- Large range of different product-types and series for all requirements regarding performance and costs
- Quick and easy adjustment by Engineering Tool
- Self-Check functionality for an enhancement of system availability



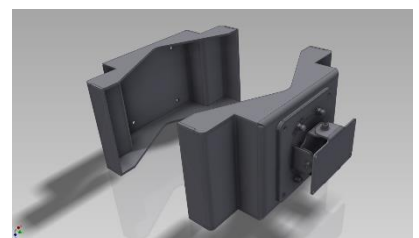
2D-measuring profile



Pylon bracket +/-90° bendable



Mounting plate



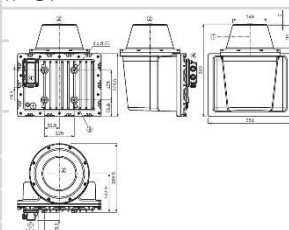
Pipe bracket

# LASE 2000D-138

## Long-Range Outdoor Scanner



### Technical data:

Features		
Version	Long Range	Outdoor
Operating range	2,5m ... 250m	
Range	2,5m ... 80 m	for 10 % Remission
Divergence (Spot size)	5.0 mrad	
Light source	Infrared	[905 nm]
Laser class	Class 1	EN/IEC 60825-1:2014; eyesafe
Scan- / and profile measurement		
Opening angle	Max. 360°	
Angular resolution	0.0625° [raw data mode], 0.125°, 0.1875°, 0.25°, 0.375°, 0.5°, 0.75°, 1°	
Angular frequency	5-15 Hz	
Interfaces		
Ethernet	100 Mbit/s	TCP/IP
Serial data transmission	19200 Baud ... 115200 Baud	RS-422
Switching outputs	1	synchronisation
Mechanics / electronics		
Electrical connection	1 x 20-poliger Harting-connector	
Operating voltage	DC 24V +/- 15%	
Power consumption	36 W (without heating) + 140 W heating At start shortly 2,1 A	typical
Protection class	III	IP 67
Dimensions [L x W x H]	250 x 350 x 391.1 mm	
Weight	9.1 kg	
Ambient data		
Ambient operating temperature	-25° C ... +50° C	
Storage temperature	-20° C ... +70° C	
Max. relative air humidity	5 ... 85 %, non-condensing	





# LASE 2000D-139

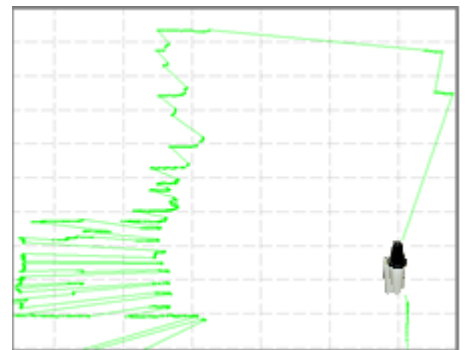
## Long-range outdoor scanner



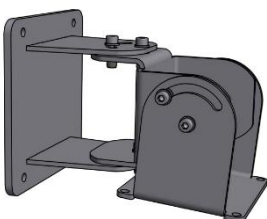
### Features und advantages:

- Contactless long-range 2D-profile measurements
- Outdoor-applicable by integrated heating-system
- Range of 120 m on dark natural targets
- Range up to 250 m on natural targets
- High accuracy, resolution and measuring rate
- Interfaces RS-422; Ethernet TCP/IP, CAN BUS
- Build in self test (BIST)
- Rugged design – IP 67
- 2 echo technology

- High performance in several applications
- Laser measuring-sensor with highest accuracy in its class
- Fast and reliable detection of objects in nearly all environments
- Large range of different product-types and series for all requirements regarding performance and costs
- Quick and easy adjustment by Engineering Tool
- Self-Check functionality for an enhancement of system availability



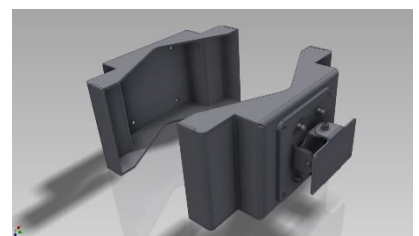
2D-measuring profile



Pylon bracket +/-90° bendable



Mounting plate



Pipe bracket

# LASE 2000D-139

## Long-Range Outdoor Scanner

### Technical data:

<b>Features</b>		
Version	Long Range	Outdoor
Operating range	5m ... 250m	
Range	5m ... 120 m	for 10 % Remission
Divergence [Spot size]	5.0 mrad	
Light source	Infrared	[905 nm]
Laser class	Class 1	EN/IEC 60825-1:2014; eyesafe
<b>Scan- / and profile measurement</b>		
Opening angle	Max. 360°	
Angular resolution	0.0625° [raw data mode], 0.125°, 0.1875°, 0.25°, 0.375°, 0.5°, 0.75°, 1°	
Angular frequency	5-15 Hz	
<b>Interfaces</b>		
Ethernet	100 Mbit/s	TCP/IP
Serial data transmission	19200 Baud ... 115200 Baud	RS-422
Switching outputs	1	synchronisation
<b>Mechanics / electronics</b>		
Electrical connection	1 x 20-poliger Harting-connector	
Operating voltage	DC 24V +/- 15%	
Power consumption	36 W [without heating] + 140 W heating At start shortly 2,1 A	typical
Protection class	III	IP 67
Dimensions [L x W x H]	250 x 350 x 391.1 mm	
Weight	9.1 kg	
<b>Ambient data</b>		
Ambient operating temperature	-25° C ... +50° C	
Storage temperature	-20° C ... +70° C	
Max. relative air humidity	5 ... 85 %, non-condensing	

