

Datasheet  
**PeCo LC 3.0/3.0 PRO**



## Success is countable!

Laser-based counting of all road users  
including classification and speed recording

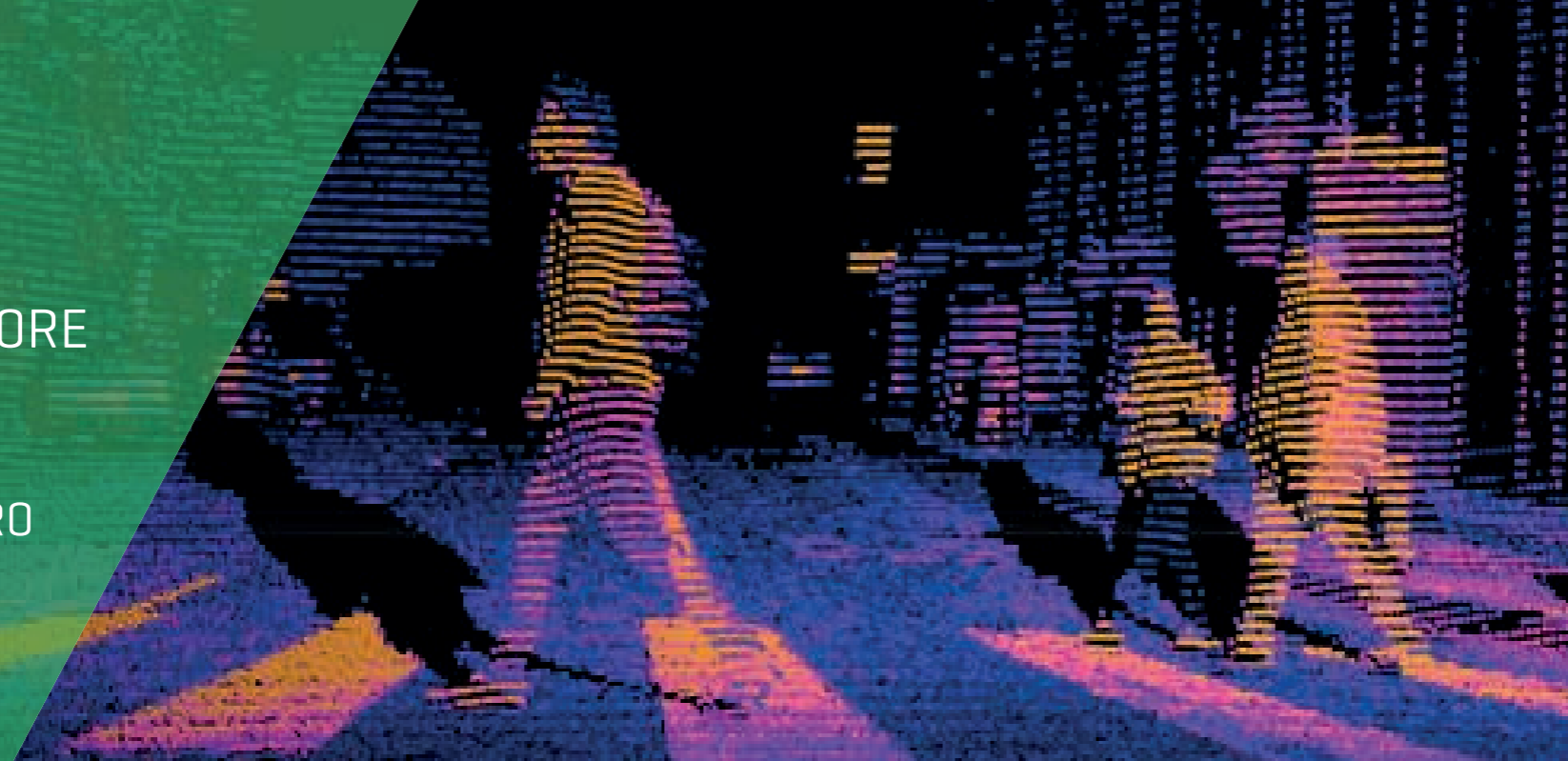


Laser-based counting

## PEOPLECOUNTER AND MORE

Laserscanner

PeCo LC 3.0 / PeCo LC 3.0 PRO



### ABOUT PeCo LC 3.0/3.0 PRO



The **PeCo LC 3.0 / PeCo LC 3.0 PRO** Laser scanner is the world novelty in the field of outdoor counting in 2022! The laser scanner not only registers the movement of people in all conceivable entrance, exit and passage areas of real estate and pedestrian zones without restricting the movement of the people to be recorded by channeling, but it also records as **PRO-variant (PeCo LC 3.0 PRO)** also all other road users and assigns them to different "categories/classes". Using special multi-layer technology, the direction of movement of all people and road users in the detection area is registered, from which the frequencies are determined. The **PeCo LC 3.0 / PeCo LC 3.0 PRO** is the first outdoor scanner that directly determines the capture rate. The data is prepared and ready for evaluation in the LASE PeCo cloud.

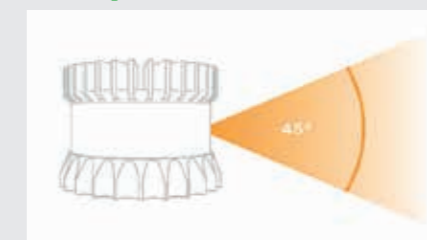
### FEATURES PeCo LC 3.0/3.0 PRO

- ✔ Suitable for outdoor use, insensitive to environmental influences
- ✔ High counting accuracy of up to 98%
- ✔ Mounting height up to 25 m
- ✔ Passage width up to 40 m
- ✔ Classification of people, vehicles and other road users into their subgroups
- ✔ Several measuring lines per device including direction detection
- ✔ Recording of speeds and dwell times
- ✔ Laser class 1 "eye safe" [EN 60825-1:2014]
- ✔ Multi-layer scanner [32 or 64 layers] for reliable counting
- ✔ Safety under data protection law
- ✔ Capture rate with a scanner [frequency before and into a store]

### APPLICATION AREAS PeCo LC 3.0/3.0 PRO

- ✈ Airports / main station
- 🏙 Cities
- 📅 Events
- 🏦 Banks
- 🏪 Retail
- 🛒 Shopping center
- 🎡 Amusement parks
- 🏛 Exhibition halls
- 🏛 Museums
- 🚦 Traffic

### TECHNICAL DETAILS PeCo LC 3.0/3.0 PRO



PECO LC 3.0

PECO LC 3.0 PRO

| Characteristics                 | PECO LC 3.0                         | PECO LC 3.0 PRO |
|---------------------------------|-------------------------------------|-----------------|
| Vertical resolution             | 32 layers                           | 64 layers       |
| Installation height             | 3 m ... 25 m                        | 3 m ... 25 m    |
| Detection width                 | up to 40 m                          | up to 40 m      |
| Counting accuracy               | up to 98%                           |                 |
| Laser class                     | class 1 [eye safe; EN 60825-1:2014] |                 |
| Scan and profile measurements   |                                     |                 |
| Opening angle                   | 45° [+22,5° bis -22,5°]             |                 |
| Scan frequency                  | 10 or 20 Hz                         |                 |
| Electrics                       |                                     |                 |
| Operating voltage               | 12 or 24 VDC                        |                 |
| Power consumption               | 14-20 W                             |                 |
| Dimensions [diameter x height]  | 85mm x 73,5mm                       |                 |
| Weight                          | 447 g                               |                 |
| Environmental data              |                                     |                 |
| Operating temperature           | -40°C ... +60°C                     |                 |
| Protection class                | IP68, IP69K                         |                 |
| Features                        |                                     |                 |
| Counting people                 | YES                                 | YES             |
| Classification people / traffic | NO                                  | YES             |
| Zones including dwell times     | NO                                  | YES             |
| Speeds                          | NO                                  | YES             |
| Route analysis                  | NO                                  | YES             |
| Capture Rate                    | YES                                 | YES             |

## Contact

LASE PeCo Systemtechnik GmbH  
Rudolf-Diesel-Str. 115  
DE-46485 Wesel  
Germany

Tel.: +49 281 95990-133

Fax: +49 281 95990-111

Website: [www.lase-peco.com](http://www.lase-peco.com)

Mail: [counting@lase-peco.com](mailto:counting@lase-peco.com)

